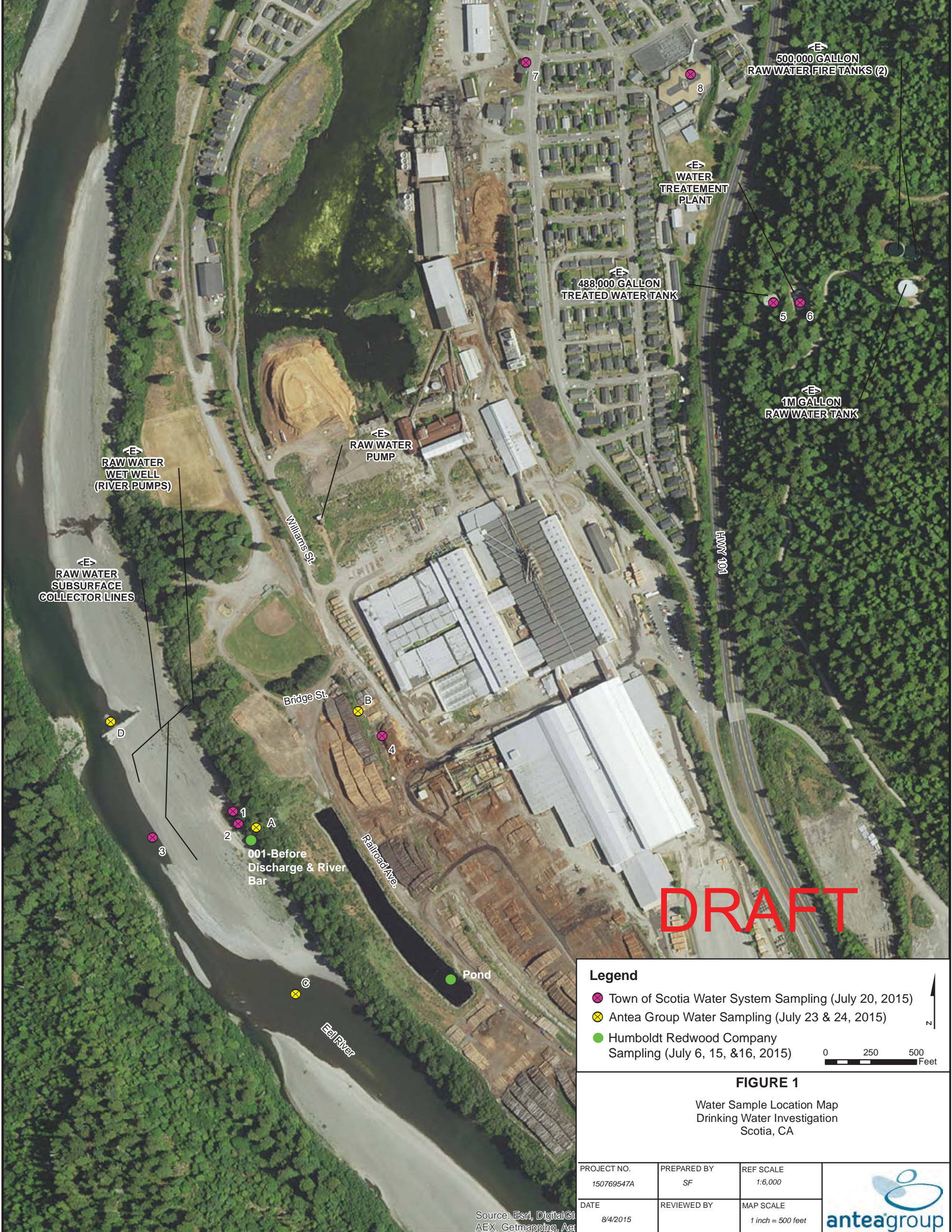


Water System Samples	
Sample	Explanation
1	Storm Drain
2	Gravel Bar
3	Eel River Surface H2O
4	Chip Pile H2O (Not Analyzed)
5	Finished Water Tank
6	Raw Water Tank
7	143 Main Dist. Line
8	School Dist. Line
A	Storm Drain Disharge Point (Sample ID: Discharge-001)
B	Chip Pile Standing H2O (Sample ID: 002)
C	Eel River Surface H2O, Upstream (Sample ID: 3)
D	Eel River Surface H2O, Downstream (Sample ID: 4)

Samples Up Eel and Bridge Downstream collected from natural seeps at locations north of the sawmill near the Eagle Prairie Bridge.



**Legend**

- Town of Scotia Water System Sampling (July 20, 2015)
- Antea Group Water Sampling (July 23 & 24, 2015)
- Humboldt Redwood Company Sampling (July 6, 15, & 16, 2015)

0 250 500 Feet

**FIGURE 1**  
Water Sample Location Map  
Drinking Water Investigation  
Scotia, CA

PROJECT NO. 150769547A	PREPARED BY SF	REF SCALE 1:6,000
DATE 8/4/2015	REVIEWED BY	MAP SCALE 1 inch = 500 feet



Source: Esri, DigitalGlobe, GeoEye, IGN, Aeri, Getmapping, Aero